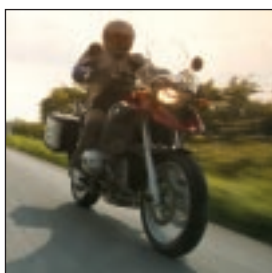


Distanzia: Adventure Sport



- Ideal for larger capacity dual sport bikes
- Biased towards on-road use but also very capable on dirt tracks
- 90% Road, 10% off Road
- Rubber compound specially formulated for excellent wet and dry grip



- Superb tyre life
Distinctive, rugged-looking tread pattern
- Speed rated up to 130mph in some sizes
- Special compound
Supermoto variants

Because dual sport bikes tend to spend more of their time on the road rather than nipping along dirt trails, Avon has biased the performance of the Distanzia more towards tarmac ability. Yet if the mood takes you, the Distanzia also behaves with distinction off the beaten track.

With a rugged-looking tread pattern that complements the style and purpose of your bike, the Distanzia has a rubber compound that gives confidence-inspiring grip in the wet as well as the dry. Furthermore, its handling characteristics are designed to complement and enhance the way larger capacity dual sports bikes corner and change direction; the Distanzia is also very stable in a straight line, too.

With long tyre life as part of its credentials, along with speed ratings that stretch up to 130mph in some sizes, the Distanzia is the ideal choice for your dual sports bike.

Specification

Size	Load/Speed Index	Rec Rim (inch)	Aft Rim (inch) Min/Max	Overall Width (mm)	Overall Dia (mm)	Size	Load/Speed Index	Rec Rim (inch)	Aft Rim (inch) Min/Max	Overall Width (mm)	Overall Dia (mm)
------	------------------	----------------	------------------------	--------------------	------------------	------	------------------	----------------	------------------------	--------------------	------------------

DISTANZIA AM43 FRONT

300-21	51S	1.85	1.60* - 2.15	91	704
80/90-21	48S	1.85	1.60* - 2.15	84	693
90/90-21	54H	2.15	1.85* - 2.50	92	706
90/90-21	54T	2.15	1.85* - 2.50	92	706
100/90-19	57H	2.50	2.15* - 2.75	105	666
110/80 R19	59H/V	2.50	2.15* - 3.00	109	664
120/70 R17 SM	58H	3.50	3.00 - 3.75	121	603

SM - Super Moto *Equivalent sizes 1.60 = WM1, 1.85 = WM2, 2.15 = WM3



DISTANZIA AM44 REAR

400-18	64S	2.50	2.15* - 2.75	120	675
410-18	60S	2.50	2.15* - 2.75	115	650
460-18	63S	2.75	2.15* - 3.00	122	667
110/80-18	58S	2.50	2.15* - 3.00	115	643
120/80-18	62S	2.75	2.50 - 3.00	125	666
120/90-17	64S	2.75	2.50 - 3.00	131	650
130/80-17	65T	3.00	2.50 - 3.50	138	654
130/80 R17	65H	3.00	2.50 - 3.50	133	643
140/80 R17	69H	3.50	3.50 - 3.75	144	652
150/60 R17 SM	66H	4.00	4.00 - 4.50	148	614
150/70 R17	69H/V	3.50	3.50 - 4.00	153	640
160/60 R17 SM	69H	4.50	4.25 - 5.00	160	623

SM - Super Moto 2.15 = WM3

